

# Information Organizer: Causes of World War I

**Fundamental Causes:** the *fundamental* causes of a conflict are those things that take place over time that cause bad feelings between nations, groups, or individuals.

The fundamental causes of World War I were:	
1)	3)
2)	4)

**Immediate Cause:** the *immediate* cause of a conflict is the event or events that leads to the actual outbreak of fighting between nations, groups, or individuals.

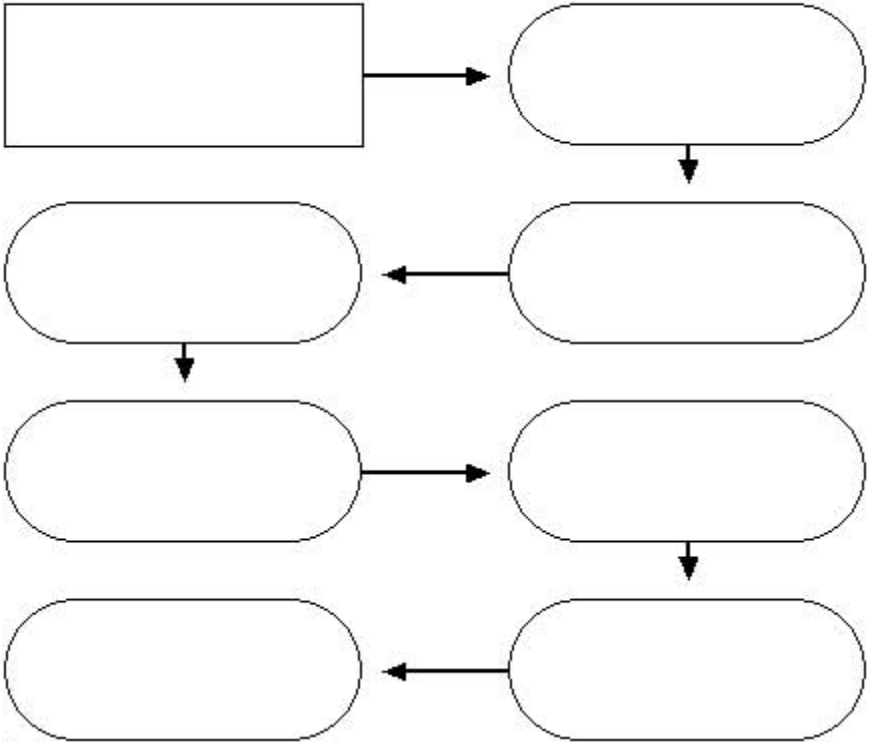
The immediate cause of World War I was:

**Steps to War:** War broke out in Europe over what seems, in retrospect a minor incident – the assassination of Austria-Hungary’s Archduke Franz Ferdinand by a Serbian nationalist. The system of European alliances however, was so complex and entangling that a minor incident became a world war.

After (1) Archduke Franz Ferdinand was assassinated, (2) Austria-Hungary declared war on Serbia. Serbia was allied with Russia, so (3) Russia declared war on Austria-Hungary to defend Serbia. Once Russia was in the war, Germany was obligated to come to the aid of its ally Austria Hungary, so (4) Germany declared war on Russia. France was Russia’s ally, so when Germany declared war on Russia, (5) France declared war on Germany. (6) The German army invaded Belgium on its way to attack France. Belgium was allied with Great Britain, so (7) Great Britain declared war on Germany. The result was World War I.

*Complete the flow-chart on the next page by writing each event above in the correct space. When you are done you will be able to see the sequence of events that led to the outbreak of fighting.*

**Steps to War**



**Who's Who?** Study the map and the reading to determine which side of the war the following nations were on. Complete the chart below.

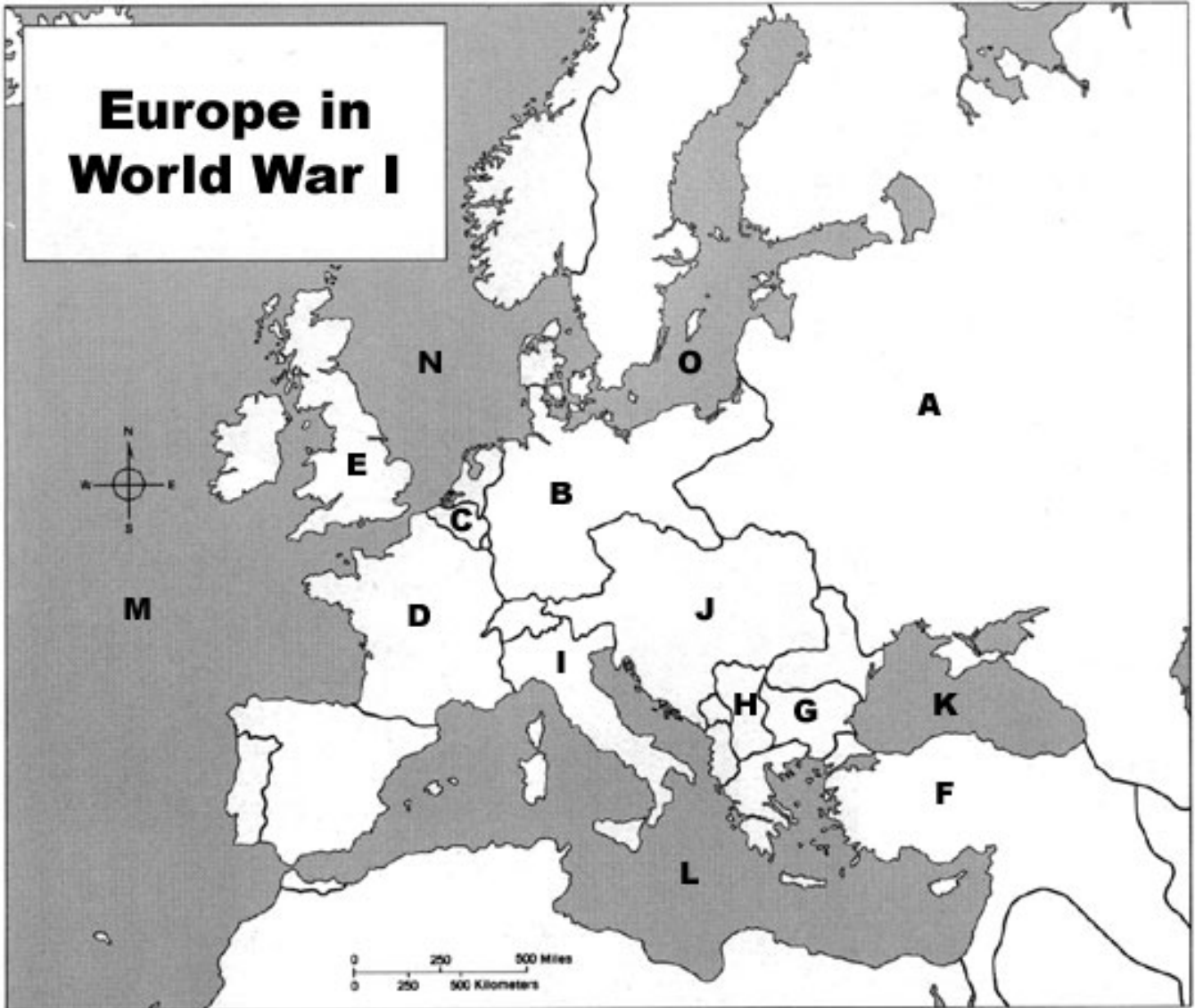
Great Britain – Germany – Russia – Austria-Hungary – Bulgaria – Turkey – France

Allies	Central Powers

**Where's Where?** Identify each location below by writing the letters on the map in the correct spaces.

- |                                 |                         |                            |                     |
|---------------------------------|-------------------------|----------------------------|---------------------|
| ____ 1. Great Britain (England) | ____ 5. Austria-Hungary | ____ 9. Belgium            | ____ 13. Black Sea  |
| ____ 2. France                  | ____ 6. Serbia          | ____ 10. Bulgaria          | ____ 14. North Sea  |
| ____ 3. Russia                  | ____ 7. Italy           | ____ 11. Atlantic Ocean    | ____ 15. Baltic Sea |
| ____ 4. Germany                 | ____ 8. Turkey          | ____ 12. Mediterranean Sea |                     |

# Europe in World War I



Uncle Sam says, "Remember...there will be a map on the World War I quiz. The things you read about will make more sense if you know where they happened!"